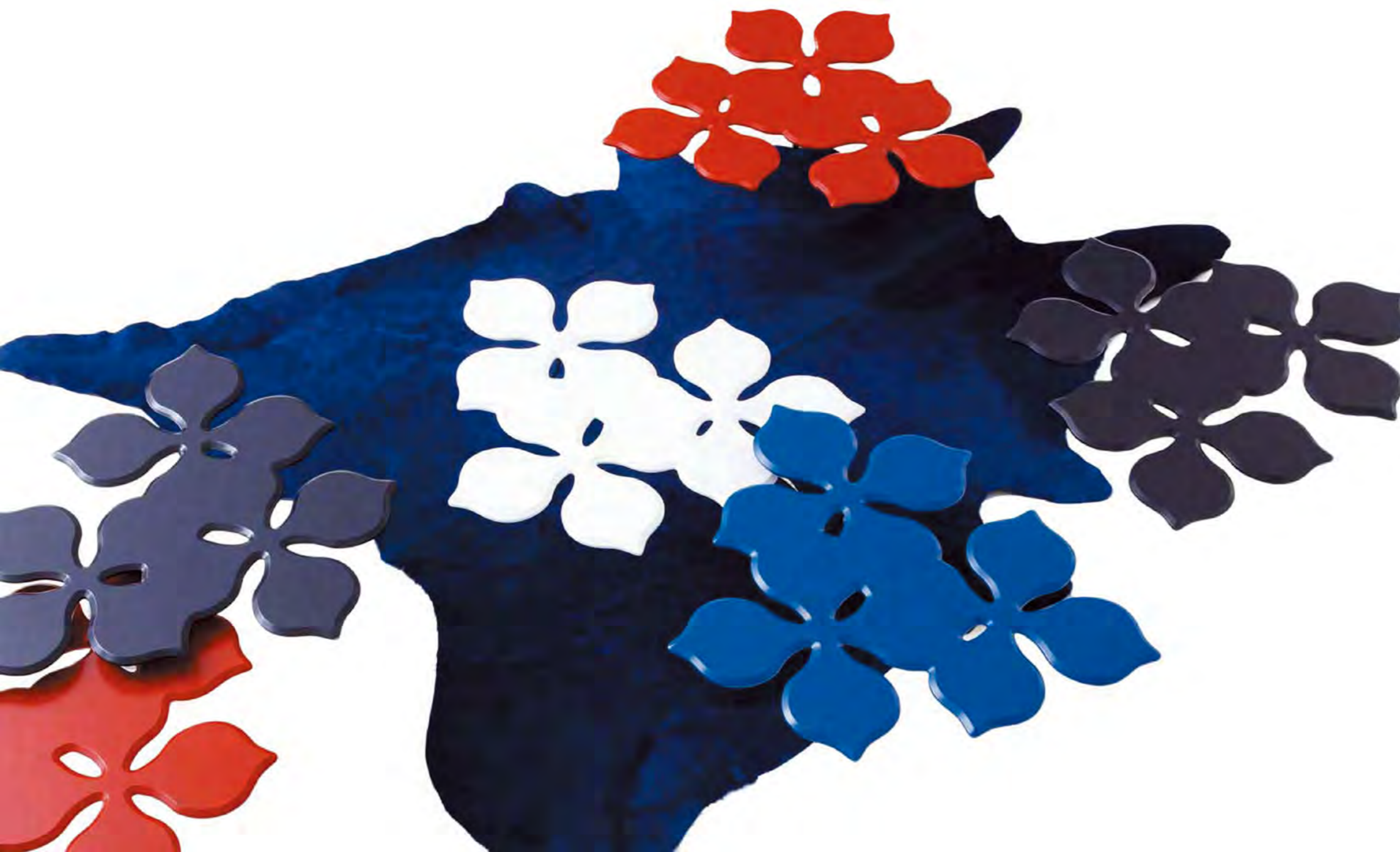


## *Cosmic Collection*



### How do we make your work furniture?

Once you place your order, the People get to work. With real passion they make sure your order is delivered to you within a few weeks, precisely to your specifications and on time. The furniture goes through various stages thereby.

# Materials Technology

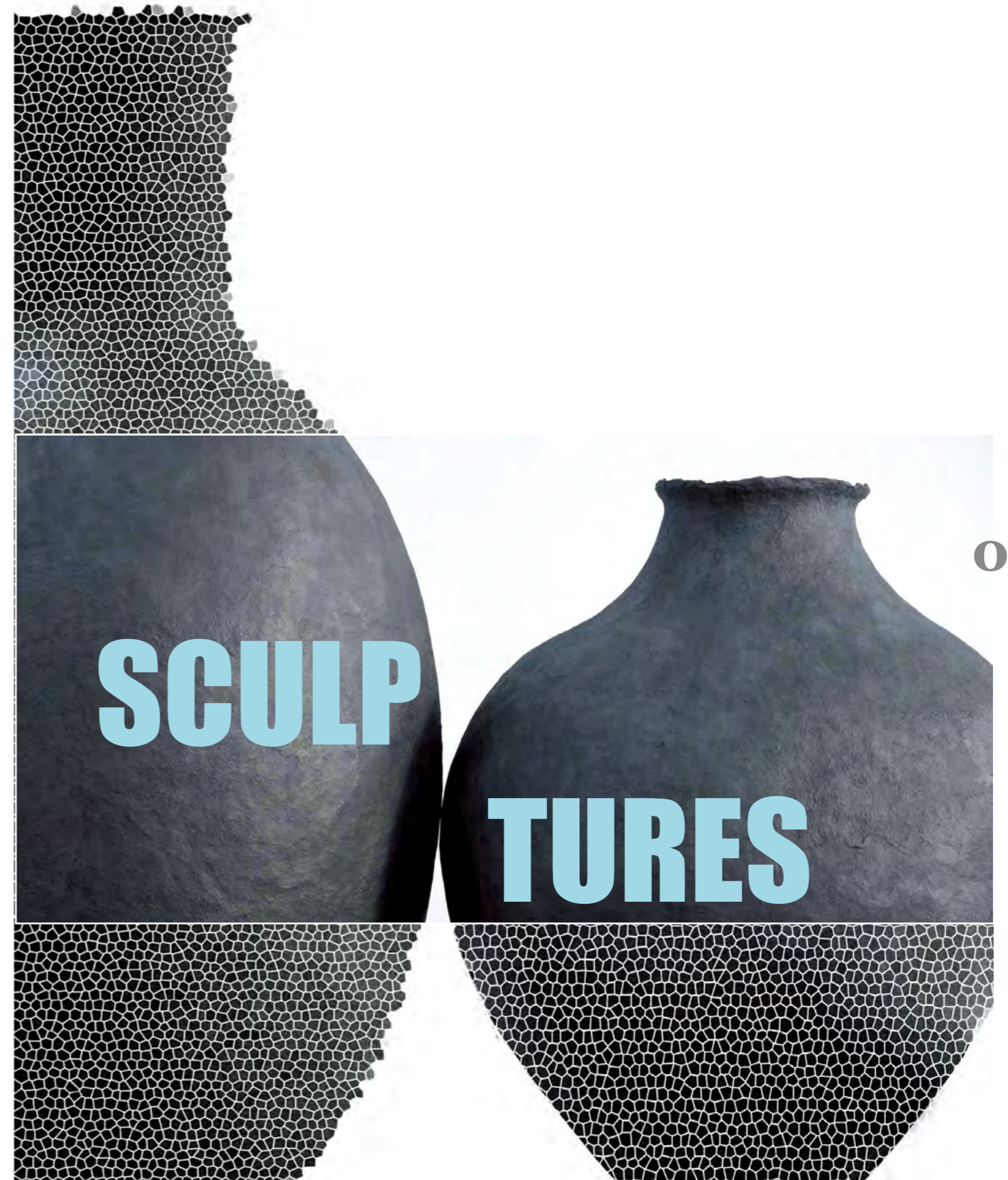
---

The “sculptures” are unique in their own way, specially designed to be full of love, distinctive and self-willed. This endows them with a specific character of their own. The sculptures are artistic, but also imbued with tremendous comfort and designed to put the fine touch to distinctive interiors.

# 03

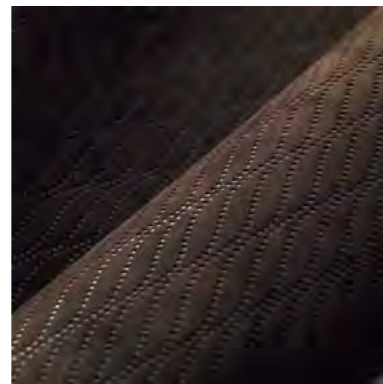


# 04



## Foam

Depending on the desired comfort level we combine different high-quality foams with one another. An active sofa has a stiffer seat. Whilst softer foams are applied in passive, somewhat more nonchalant, sofas. With more complex shapes, the frame is totally encased in foam in dies, but a large share of bodies are provided with the right layer of foam by skilful hands. By finishing it off with a soft stop layer, Hework prevents you from being able to feel the transitions between sections of different foams through the covering.



# LAYLA



SF-LAY-A



SF-LAY-AL



SF-LAY-AM



SF-LAY-AR



The Layla collection is the perfect example of classic, simple design, where less is definitely more. The clean lines are complemented by stainless steel base.

# LAYLA

Layla's sophisticated style is achieved through the use of simple linear forms. Combining geometric design with ergonomic comfort, Layla is a stunning addition to any lounge or reception area. Layla is available as an armchair, three-seater or generous four-seater sofa. Layla is also available in a selection of modular units which can be combined to create various configurations.

SF-LAY-B

18



# Boxer

A timeless design based on classic linear forms. Even when it has gone the distance, Boxer maintains a robust and imposing presence. At the same time Boxer has a soft side, offering a welcome that is uniquely its own. It has all the high comfort levels associated with a classic design.



SF-BOX

07



**studio**  
transforming SPACES



All these has stood the test of time. A key feature of this seating is the generously padded upholstery. Boxer draws further strength and comfort from a traditional hardwood frame overlaid with interwoven elasticated webbing. Boxer is a fully upholstered range based on single, two and three-seat options.

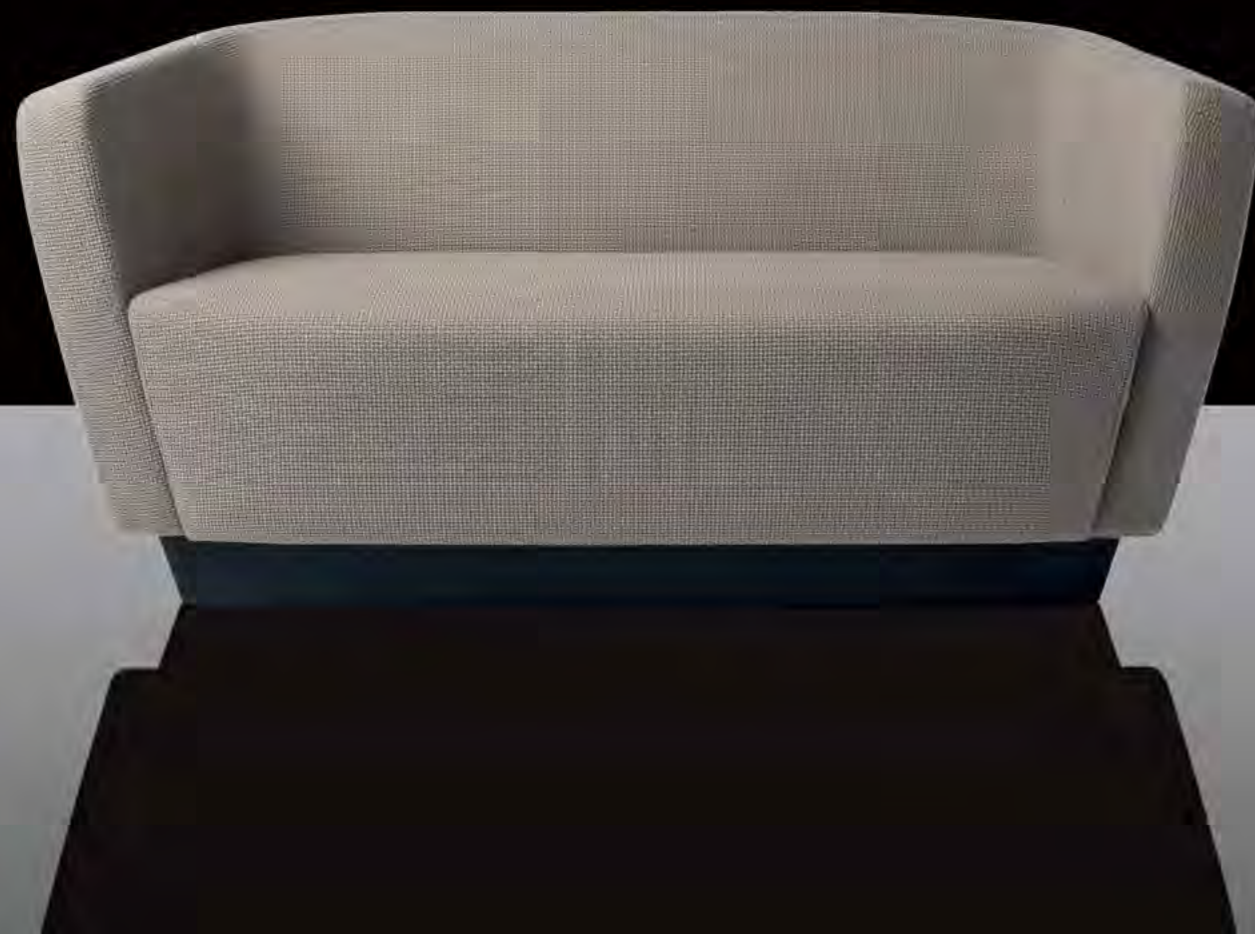
Its character can be subtly enhanced through your choice of chrome feet. Its classic design qualities make it suitable for reception and lounge areas ranging from the traditional through to the ultra-modern.

08

# Rivo

Stability from a profiled solid timber base.  
The Construction. Wooden frame covered in foam. Spring-suspended seat element for higher comfort. Visible shell upholstered in different fabrics or leather.

13



SF-RIVO



14



If comfort is cast into a simple ergonomic shell-type seat, sitting in it feels like it was moulded for you.

# Prima

Prima is a contemporary classic. Secure, dependable and comfortable, Prima's classic design and form make this a chair that offers a counterbalance to the pressures of today's hectic routines.



20



SF-PRI



Designed for use in lounge, reception and third-space areas, Prima's soft, rounded forms encourage a relaxed ambience. This makes it ideal seating for ensuring visitors immediately feel welcome.



# Zoot

# 10

The timeless, arched design of Zoot and the commitment to craftsmanship articulated in the twin-stitching make this chair a contemporary classic. Zoot is also a chair that makes no compromises on comfort. It features a traditional hardwood frame for strength, overlaid with interwoven elasticated webbing for flexible support. This ensures Zoot has the high comfort factor that has become the hallmark of Boss. The self-confident Zoot is a chair that is suited to any contemporary workspace - modern, retro or traditional.



# 09



SF-ZOOT



# Taiki



She, Taiki, without the rich design, without the proud nobility, but with the warmth, the brilliance and the approachability, offering every visitor unrestrained space.



SF-TAI



# Odessa



This design, dating from 1964, is still up to date. As slim and tender as your first love. A classic that is now in production for its second time. Now available as contract seating for executive areas and lounges or as a defining statement in restrained interiors. The Odessa is available as a 3 or 2 seater or as an easy chair in leather or fabric with a chrome base.



SF-ODE

21

# Coast



Restrained lines reflecting a pure, sober simplicity. A model of timeless elegance. A classic example of a product that is easy to use and durable, without making concessions to the visual line. Comfortable to sit or lie on and also a pleasure to behold.



SF-COA

22

# Orlando

It is made by pure handwork, perfect integration of advanced technology and traditional technique, overflowing with vitality and passion representative. Apart from slender and soft lines, elegant and high quality fell is carefully selected.

SF-ORL

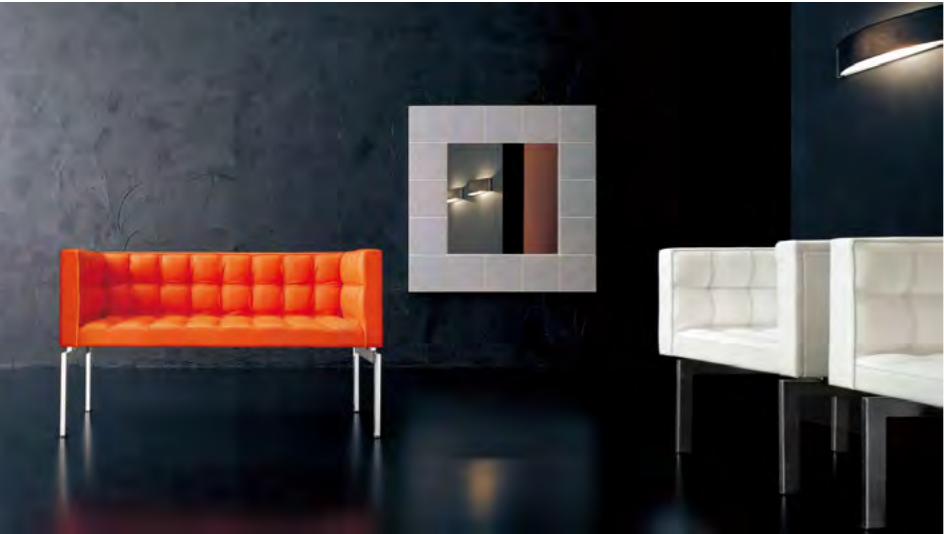


# Zora



SF-zora

Corium, leatherette or cloth facing perfectly combines with silver gray stainless steel frame that fully deduces grace and displays characteristic, fashion and simpleness.



# Heloise



25



SF-HEL-B



SF-HEL-A

# Liz



SF-LIZ



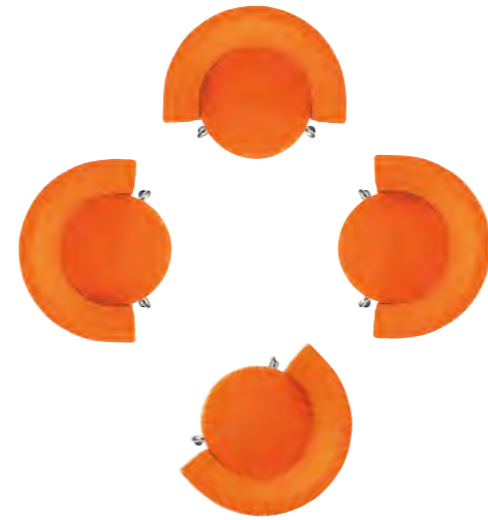
SF-LIZ-D

Pursuing the concordant life, Pursuing the calm and quiet office space, pursuing the best relaxation, which is the theme we want to attain.



26

# Sophia



Style, personality is its most unique expression. Comfort is its most tender and exquisite face. Our sofa clearly demonstrates the new view of modern office furniture.



SF-SOP

# 27

# Michelle



SF-MIC



# 28

# Sibyl



SF-SIB-D



SF-SIB



SF-SIB-B

SF-SIB-A

# Sarah



SF-SAR-B

SF-SAR-A

Humane and considerate craftsmanship matches with modern shaping concepts, bringing certainly the ideal wise choice to you. Remarkable space gives you the joy of office work, and more importantly the joy of success.





# Cubus

The form consequently interprets the function. An inviting design that actually embodies sitting. You might say: the pure armchair, the pure sofa.

SF-CUB

Based on metal leg with high quality wood frame, will provide guarantee for security and stability.

A stable framework and its carefully selected foam coating sufficient to ensure the comfort of their seating.





# Nurja

Simple works, plain beeline, after wise and spiritual combining, become an existence of abundant feeling and deep significance, create a favorite space in tumultuous furniture industry.



SF-NUR-D



33

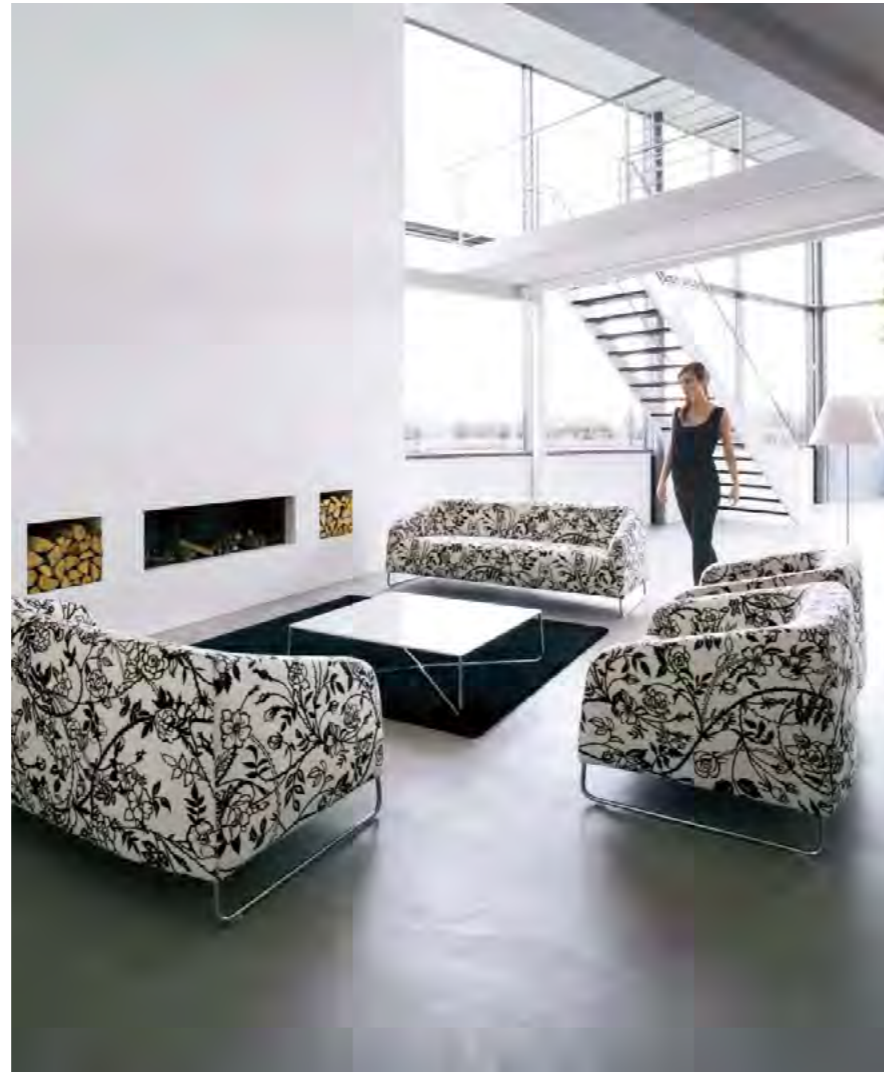
34



SF-NUR

# Troy

A high seating position with a firm seat. A chair that makes you want to linger at the table. Inviting and soft. Troy is available in different colors, patterns and materials, making it suitable for both classic and modern interiors.



SF-TROY

# 35

# Coral



SF-COR

Elegance and fashion harmonious coexist, exquisite and luxury freely demonstrate, superb nobility is represented in different space angles, to feel the graceful manner of top quality, and the classic meaning.

# 36

# Carol



SF-CAR

# 35

# LOFA

Lofa offers a stunning twist on what can be achieved with ergonomic design and striking geometric forms. Its interlocking forms offer a balance and symmetry that challenges the eye with every change of perspective.



38



SF-LOFA



# Viola



39



SF-VIO-A



SF-VIO-D

SF-VIO-B

# Doris

With abstracting the soul of office furniture design ideas from Italy and Germany, and the elite of modern technology and fashions from Europe.

With abstraction of the soul of Chinese and the western art, in simple style, its design breaks through of traditional ideas. demonstrates the spirit of excellence and presents a feel of stability and affluence.



SF-DOR

40

# Gail



SF-GAIL

# 41



# Theresa



SF-THE

Simplified but lively outline is designed on the basis of the body lines. It offers you a comfortable place where you may come out with one after another innovative idea.

# 42



# Denise



SF-DEN-C



SF-DEN



43

# Caroline

They all say that you can not judge a matter by its appearance. But sometimes, appearance does decide everything. At the first glance, you will speed your heartbeat, lighten your eyes, soften your knees, and... blank your brain. "Love at the first sight" really exist!



SF-CAR

44

## Amanda

Simple works, plain beeline, after wise and spiritual combining, become an existence of abundant feeling and deep significance, create a favorite space in tumultuous furniture industry.

46



45



SF-AMA

# Camila



SF-CAM-D



SF-CAM



# Ivy



Whether you appreciate the grand atmosphere or modern space, whether you pursue the intelligent combination or ideal family circumstance offers you everything that requires and enjoys.

# 47

Not scattered, not passionate, not restrained, not exaggerating---all is based on the "degree", which is all natural, full of humor and wit. Let the most updated people be unwilling to stay at the casual and random pursuits, let the ability to bear luxury and slenderness reach a higher level.



SF-IVY-D

SF-IVY

# 48



# Brook



# Wint



Requirement of the items, reflection of fashion, concise, comfortable and elegant, fit to the human body, size and shape, design, attention is put to complete relaxation.

49



SF-BRO-B

SF-BRO-A

50

SF-WIN

# Adela



SF-ADE

A sofa with the allure of a metropolis, that looks at its best when standing alone. Dynamic seating arrangement that can be endlessly combined into a fresh composition.



# Abbyson



Does it feel like home ?? With the various combination, this model can meet any space, also the high backset will give you 100% comfortable, and the well designed metal base make it strong enough.



SF-ABB



# Sofa

SERIES



## Audrey

SF-AUD

Elegant and graceful shaping, tender and delicate feel makes all so comfortable and natural. Yesterday's infinite brilliance, tomorrow's splendour. demonstrates today's classical fashion among your elegance.

Say goodbye to plainness and let enthusiasm embrace romance, uniquely creative design, demonstrates the profile of new fashion.



## Flora

SF-FLO



53

## Blanche

SF-BLA



## Cathy

SF-CAT



54

# Veronica



SF-VER

Elegance and fashion harmonious coexist, exquisite and luxury freely demonstrate, superb nobility is represented in different space angles, to feel the graceful manner of top quality, and the classic meaning.



# Sofa

SERIES



## Maria

sofa series  
SF-MAR



## Delia

sofa series  
SF-DEL

We are always pursuing the balance between appearance and comfortable. With simple elements, the designers have made every model sofa, comfort, generous, We can create comfortable 1 seater, 2 seater, 3 seater to you.



## Janet

sofa series  
SF-JAN



57

58

# Anita

Allow yourself a moment of ultimate relaxation. And sink deep into the sofa. Because the sofa is a comfortable upholstered fauteuil whose seat and back rest seem to sink into the sofa feels like disappearing in a warm embrace, so let yourself go and relax.

60



SF-ANI



59



# Sofa

SERIES



## Bill

SF-BILL

Broad ranges of sofa and offered , no matter you are searching for a classic one, stylish one or even a practical one, sofa will be your right choice. It can be upholstered in genuine leather to show elegant and sophisticated outlook or in fine fabric. Over hundreds colors of fabric are available for your selection. Matching with different coffee table, it makes your office more relaxing and welcoming to your visitors.

## Sherry

SF-SHE



## Catherine

SF-CAT

We pay much attention to constructive design of different parts of products, and emits fully new air of elegance. Multiple popular elements contained in products whisper the perfection of manufacture engineering. Classic products come from correct understanding to today's trends .



## Nicholas

SF-NIC

# 62

## Joshua

SF-JOS



## Jada

SF-JADA



## Henry





SF-DIPI-L



SF-DIPI-M



SF-DIPI-R

SF-DIPI

Comfortable, versatile and innovative, Dipi offers a functional and stylish solution to a range of workspace seating needs. Dipi is available as either a left, a right or a centre piece and when they are placed together they make an interesting twist on the traditional three-seat sofa.

With its deep comfort and panache, this seating solution lends itself to breakout, lounge and reception areas. Each item in the Dipi range can have its distinctive individuality further enhanced by your choice of upholstery.



# Ibis



SF-IBIS-A

New century and life is freely and artistic. Everyone has the right to choose own work space in this colorful world. The best thing is the thing fits your need closely.



SF-IBIS-B



# Elsie

Elegantly genuine leather sofa coupled with solemn and refined solid wood tea table is an indispensable option for receiving distinguished guests. Of course, you can also select luxurious metal and glass whatever we will meet your needs.



SF-ELS

# Bess

The most beautiful work human can make is perfect combination of art and functionality. This series decides the unchangeable meanings for the word of "perfect"



SF-BESS



# Anny



It is surprised to have such structure designed. And technology is worth while being appropriated. From the details, you can find out the quality and graceful taste of products.



SF-ANNY

# Debby

Advanced design allows office business handling full of the sense of art. The elaborate production based on traditional craft and skill and natural materials is original.



SF-DEB



This is the latest design . The novel backset was created from the wings of angel. Our finest handcraft and material keep the comfortable . You will be well relaxed when you touch it.



SF-ROSA

A highly stylish and distinctive tub chair design with characterful broad shoulders and a compact footprint. The sofa provides a generous comfortable sit and the moulded seat and back are enhanced by superb upholstery detailing.





SF-GARY



Vivien  
sofa series  
SF-VIV



Gino  
sofa series  
SF-GINO



# Miranda

This sofa design is based on biology, psychology, human body structure, human measurements, environmental and psychological factors, and human engineering theory. The product's height, length and depth are designed to full, reasonable and scientific. The texture of this very distinguished and exquisite design is preferred to enterprises, in the modern businesses, good service should consider every detail, especially office sofa design.

# 73



SF-MIR

# Rebecca



SF-REB-CA



SF-REB-CB



SF-REB-AB



SF-REB-BA

# 74



SF-REB-BB



SF-REB-AA



SF-REB-CC

# Cynthia

A highly stylish and distinctive tub chair design with characterful broad shoulders and a compact footprint. The sofa provides a generous comfortable sit and the moulded seat and back are enhanced by superb upholstery detailing.



SF-CYN

# Monza

# 76

Everyone is pursuing a certain kind of style. But style has to be excavated and discovered. With creative ideas and design, style can well express your characteristic and taste.



SF-MON-A

SF-MON-B

# 75



SF-PHY-A

77



SF-PHY-B



The range has a subtle progressive design which allows all three chairs to work together in the same environment or as three individual pieces. The range is suitable for use in reception, lounge and break out areas.



SF-PHY-C



# Tina



SF-TINA



SF-TINA-D

Pursuing the concordant life, Pursuing the calm and quiet office space, pursuing the best relaxation, which is the theme we want to attain.

# Sheila



SF-SHEI-D



SF-SHEI



This sofa series made not only variable and flexible, but also brings fresh and gracious atmosphere to your atmosphere to your working environment, Each style of unit furniture will give you continuous inspiration offer you a shortcut for the promotion of your business.



The sofa are manufactured using moulded foam bodies with metal frame inserts, achieving a slender profile without having to compromise on comfort.



SF-WAL-A



SF-WAL-C



SF-WAL-B

# 81



# 82

SF-WAL-D

Achieving the elliptical forms and detailing for this chair requires a technical mastery available only to people highly skilled in their craft. Meeting such design challenges means can produce seating that is both comfortable and offers distinctive styling.

# Siro

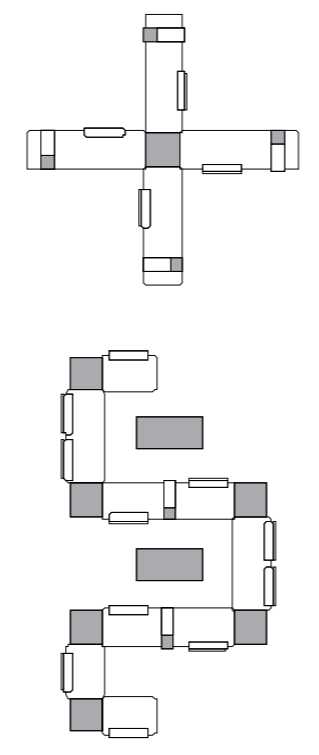
The upholstered sofa system with varying modules where the position of the back supports can be varied, the units are linked with bridge, corner or lateral tables as well as with seat cushions.  
Siro, The aesthetically complete and consequent lounge programme.



The Construction.  
Subframe, seat and back elements in a modular construction system.



84



SF-SIRO



# Stirling

This is the latest design by. The novel backset was created from the wings of angel. Our finest handcraft and material keep the comfortable. You will be well relaxed when you touch it.



SF-STI



# Ernie

SF-ERN



29

# Rosa



SF-ROSA



30

A highly stylish and distinctive tub chair design with characterful broad shoulders and a compact footprint. The sofa provides a generous comfortable sit and the moulded seat and back are enhanced by superb upholstery detailing.



SF-ROSA



# Simple

SF-SIM



# Versace

SF-VER



The sofa are manufactured using moulded foam bodies with metal frame inserts, achieving a slender profile without having to compromise on comfort.

# 38



Style, personality is its most unique expression. Comfort is its most tender and exquisite face. Our sofa clearly demonstrates the new view of modern office furniture.

# Hudson

SF-HUD



# 37

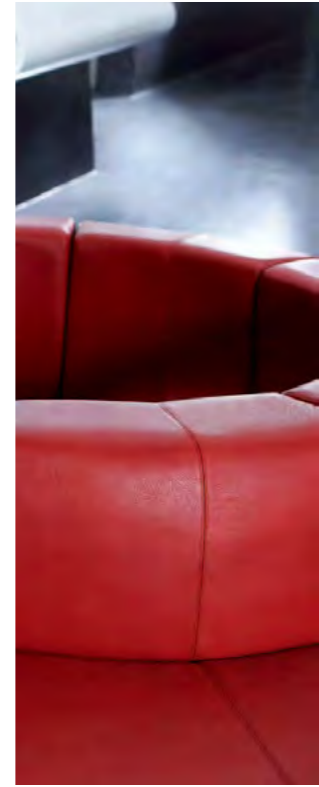


# Bernice

Perfect design concepts, and powerful combination of the functions, which create a elegant office environment, practical and efficient office space.



SF-BER-B



SF-BER-A

